

Todmorden Neighbourhood Plan

What you've said so far.....

Feedback presentation from online survey and workshops:

12.3.2016	Fielden Centre
19.3.2016	Walsden
2.4.2016	Cornholme
9.4.2016	Todmorden Town Hall



Todmorden Town Council

The Planning
Cooperative



Thank you for participating in the community workshops which form an essential part of the Todmorden Neighbourhood Plan.

Your comments will now inform the scope and content of the Plan for the benefit of the community.

Feedback has been translated into broad strategies which are outlined within this presentation.



Todmorden Town Council



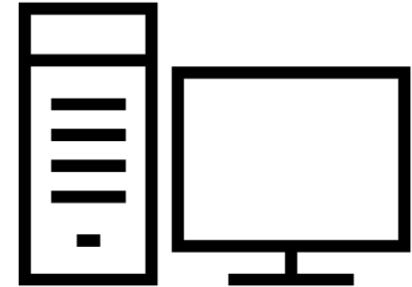
People engaged so far

To date there have been around **150** people engaged via the 4 workshops held in March and April.

93 have people completed the online survey giving a sum total of **243** representations so far.



150



93



Housing in Todmorden

- A sensible, small-site approach to new housing developments which takes full account of their visual impact and the associated flood risks
- A greater mix of housing types and tenures to ensure that all members of the community are able to find suitable housing to match their needs
- New housing to be designed with increased use of green and sustainable technologies and materials to reduce the carbon footprint of developments and lower residents' energy usage
- New housing to respect and reflect the distinctive and rural vernacular of Todmorden and the Calder Valley





The local economy

- Expansion of tourism and leisure industry including a Tourism centre, a museum, an art gallery and a greater provision of overnight accommodation for visitors
- Diversification of the local economy by supporting new employment initiatives such as co-working and micro-business spaces
- Support and expansion of existing economic sectors such as manufacturing, light industry and agriculture through new employment spaces
- Continued support in preference of independent stores as opposed to larger chain stores and the refurbishment of the markets to provide a quality local shopping experience
- Increased opportunities for local apprenticeships and training and education for adults
- Improved broadband coverage and infrastructure





Flooding and water

- Closer working relationships with all relevant flood and water organisations and bodies
- Flood impact and mitigation to be seriously considered and planned for in any new development
- Promotion of holistic flood management and defences. Including reuse of existing dams and creation of new dams, strategic hillside planting, moss and peat restoration, and the reduction of hard surfaces where possible in favour of sustainable urban drainage systems and permeable surfaces.





Built environment

- New developments to respect and reflect the historic and rural vernacular of the town
- More sustainable and renewable features incorporated into buildings to help lower their environmental impact and reduce the risk of flooding
- New flexible open spaces in the Town Centre to be designated as public space for community events and public festivals
- Support and promote the temporary use of vacant buildings for the benefit of the community
- Protection and conservation of special local heritage and historic buildings
- An improved consistent design approach to the appearance of shop frontages





Natural environment

- Preserve green spaces and develop Brownfield sites first as not to detract from the rural nature and feel of the town
- Protect and preserve the natural environment, wildlife and the rural nature of Todmorden
- Reduce air and light pollution and address the issues of litter and dog waste more effectively to give a cleaner, less polluted Todmorden
- Develop renewable energy technologies to provide a sustainable energy supply for the local community
- Preserve and enhance the canal side to become a valued leisure and tourism asset
- More effective management of and accessibility to the moors and woodlands including additional signage, litter bins, benches and overall footpath maintenance





Movement and transport

- Cycle lanes in and around Todmorden in order to promote safe, sustainable transport methods and to lower levels of car dependency
- Traffic calming measures to reduce vehicle speeds on main roads. Includes creating shared surfaces in the town centre to lower traffic speeds and increase levels of pedestrian movement and accessibility
- Improved disabled access at Todmorden train station on platform 2
- Charging points for electric vehicles located in town centre car park
- Free car parking on market days





Health and Wellbeing

- More exercise opportunities for people of all abilities and play and recreation spaces for young people including suitable football pitches
- More opportunities for food production with community allotments and grow sites and greater community participation around food growing
- Better use of the health centre's facilities through space sharing initiatives with local groups and organisations to provide more local services





Site specific feedback

Oldroyd Rd (LP0821)

- Site sits in flood zone and subject to severe flooding recently (waterlogged most of the year)
- Oldroyd farm is a grade II listed building and development of the site would detract from the setting
- Wildlife / conservation hotspot
- Narrow and deteriorating access roads (Woodhouse Rd & bridge)
- Highly unstable land
- Site is too large and out of character for Todmorden
- There is a footpath which runs through the site which has been used by many for years
- There is a gas pipe which runs under the site
- There is a shortage of farmland to rent for local farmers and this would decrease the land available
- Should remain as flood retention land and incorporate 'slow the flow' measures
- Would lead to urban sprawl and detract from the rural nature of Todmorden
- Would add to increase of traffic on Halifax Rd
- Causeway Wood has suffered severe landslides and the road is not stable/suitable
- Both access bridges are listed and are unsuitable for HGVs and larger vehicles

Former Adamroyd Mill – Victoria St (LP0649)

- Site would be perfect for development

(LP0817) Land off Meadow Bottom Rd

- Lots of amphibians (ask Hugh Firman – conservation officer)

(LP1531) Land north of Keats Ave

- High landscape value
- Too steep for development
- Too inaccessible for development

(LP0055)

- In favour of mixed use development which incorporates housing
- In favour of mixed use site with housing and smaller retailers

Land off Stoney Royd Lane (LP0651)

- Over 300 northern marsh orchids are present on site



Survey Responses

What development does Tod need?

82% of people
would like more
public open spaces
in town



44%
Need urgently

38%
Desirable

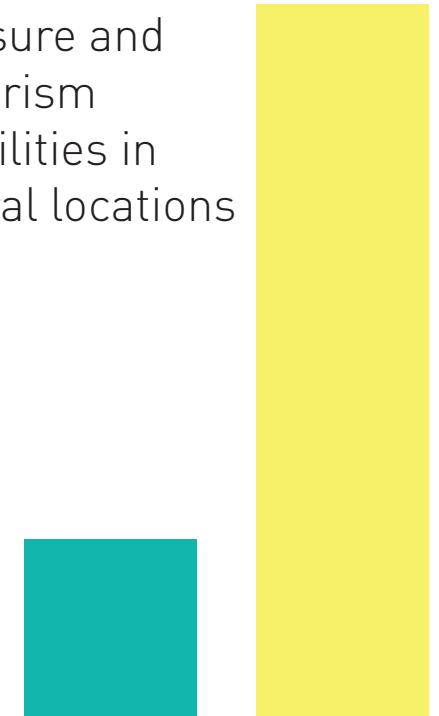
72% of people
would like
more
leisure and
tourism
facilities in
town



26%
Need urgently

46%
Desirable

56% of people
want more
leisure and
tourism
facilities in
rural locations



11%
Need urgently

45%
Desirable



Survey Responses

What development does Tod need?

60% of people would like more affordable housing in town



17%
Need urgently

43%
Desirable

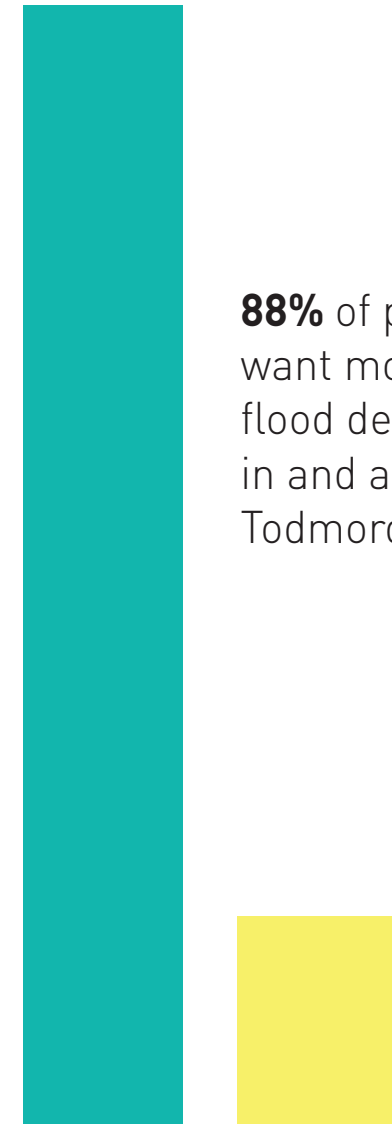
64% of people would like more accessible homes in town



18%
Need urgently

46%
Desirable

88% of people want more flood defences in and around Todmorden



74%
Need urgently

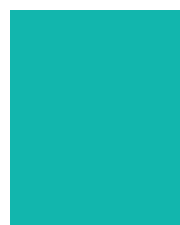
14%
Desirable



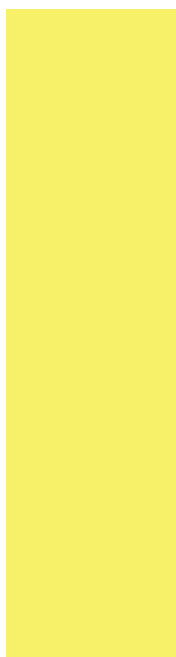
Survey Responses

What development does Tod need?

57% of people would like more office employment space in town

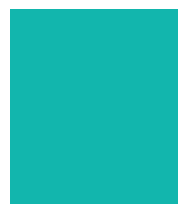


14%
Need urgently

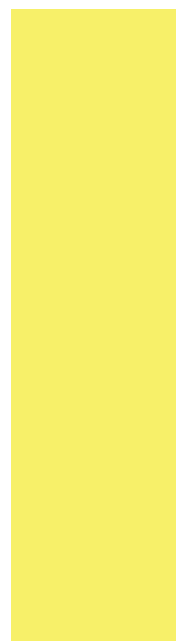


43%
Desirable

55% of people would like a greater provision of retail and shops in town



13%
Need urgently



42%
Desirable

61% of people want more light industrial and workshop space for employment



15%
Need urgently

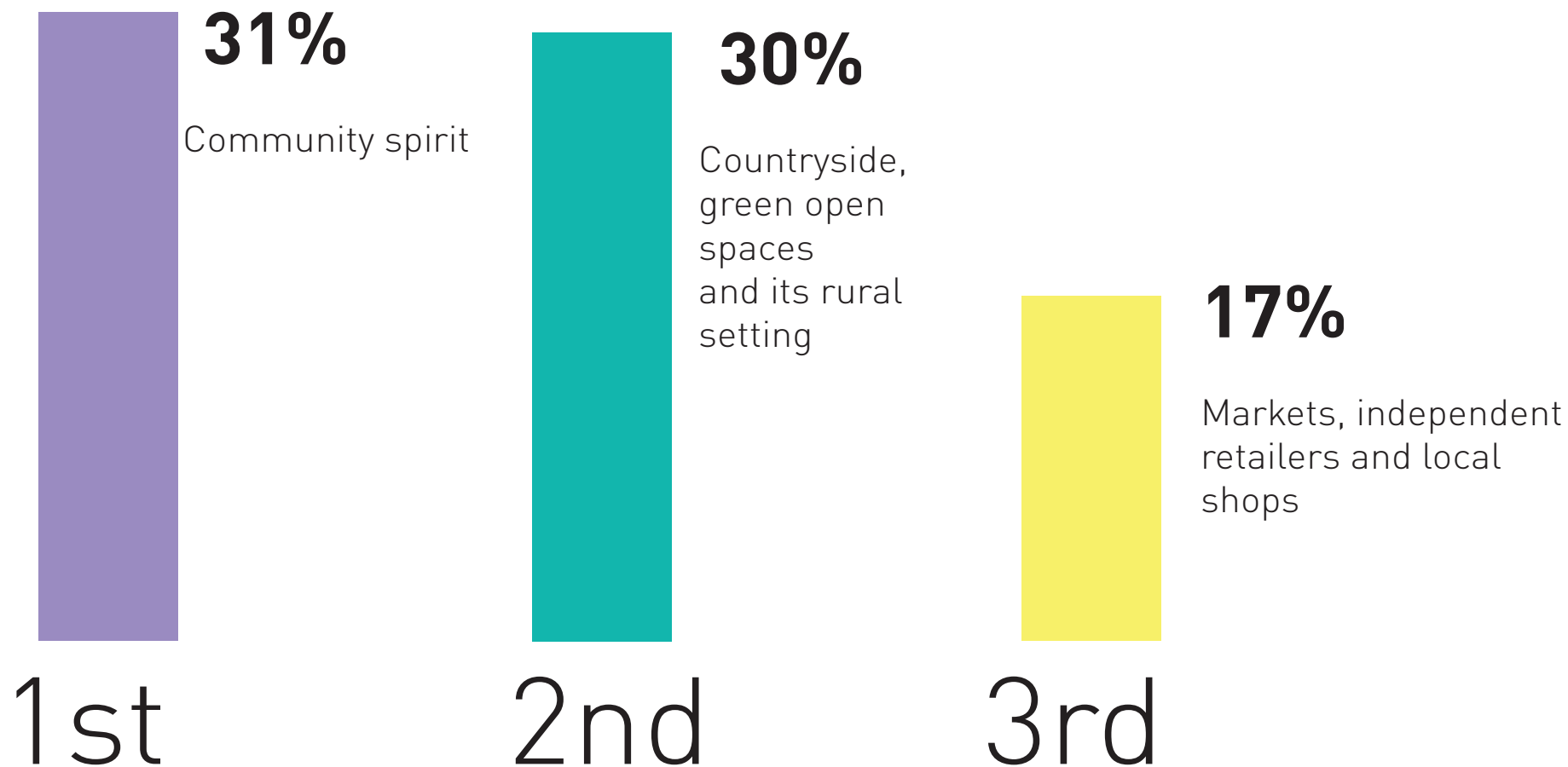


46%
Desirable

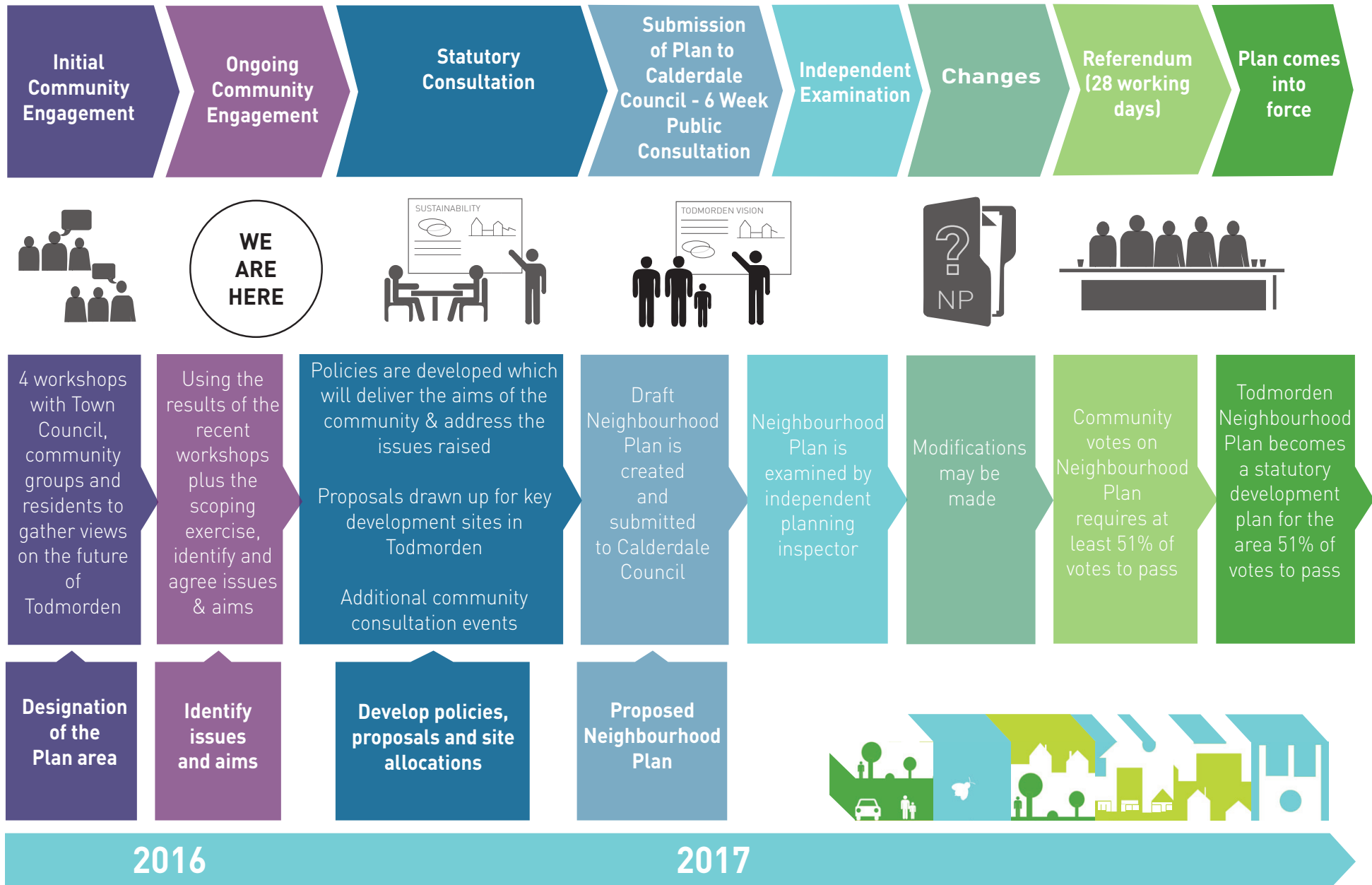


Survey Responses

What do you value the most about Todmorden?



TODMORDEN NEIGHBOURHOOD PLAN JOURNEY





Next steps.....

Additional consultation events will be programmed which forms part of an ongoing process of consultation and perspective gathering within the community

The online survey is still open, if you haven't already please complete it at...

<https://www.surveymonkey.co.uk/r/H6RFZL7>

